



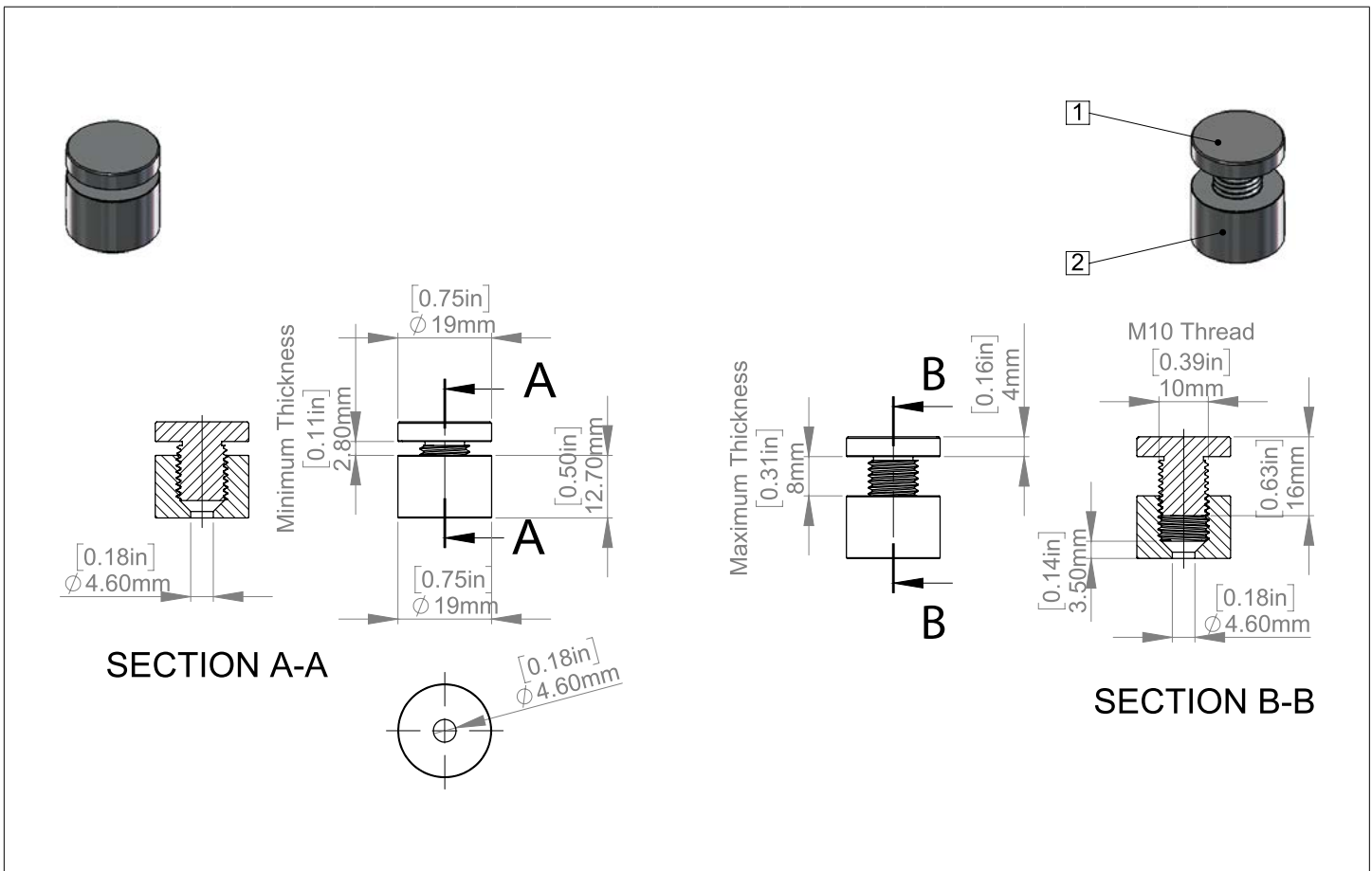
Acrylic Wall Frame Kits

Specifications and Instruction Guide

SKU	WAC1114-C-AS19-12SL	WAC1114-C-AS19-12BK	WAC1114-C-AS19-12GD	WAC1114-C-AS19-12BR
	WAC1114-C-SBLS19-12	WAC1114-C-SBLP19-12		

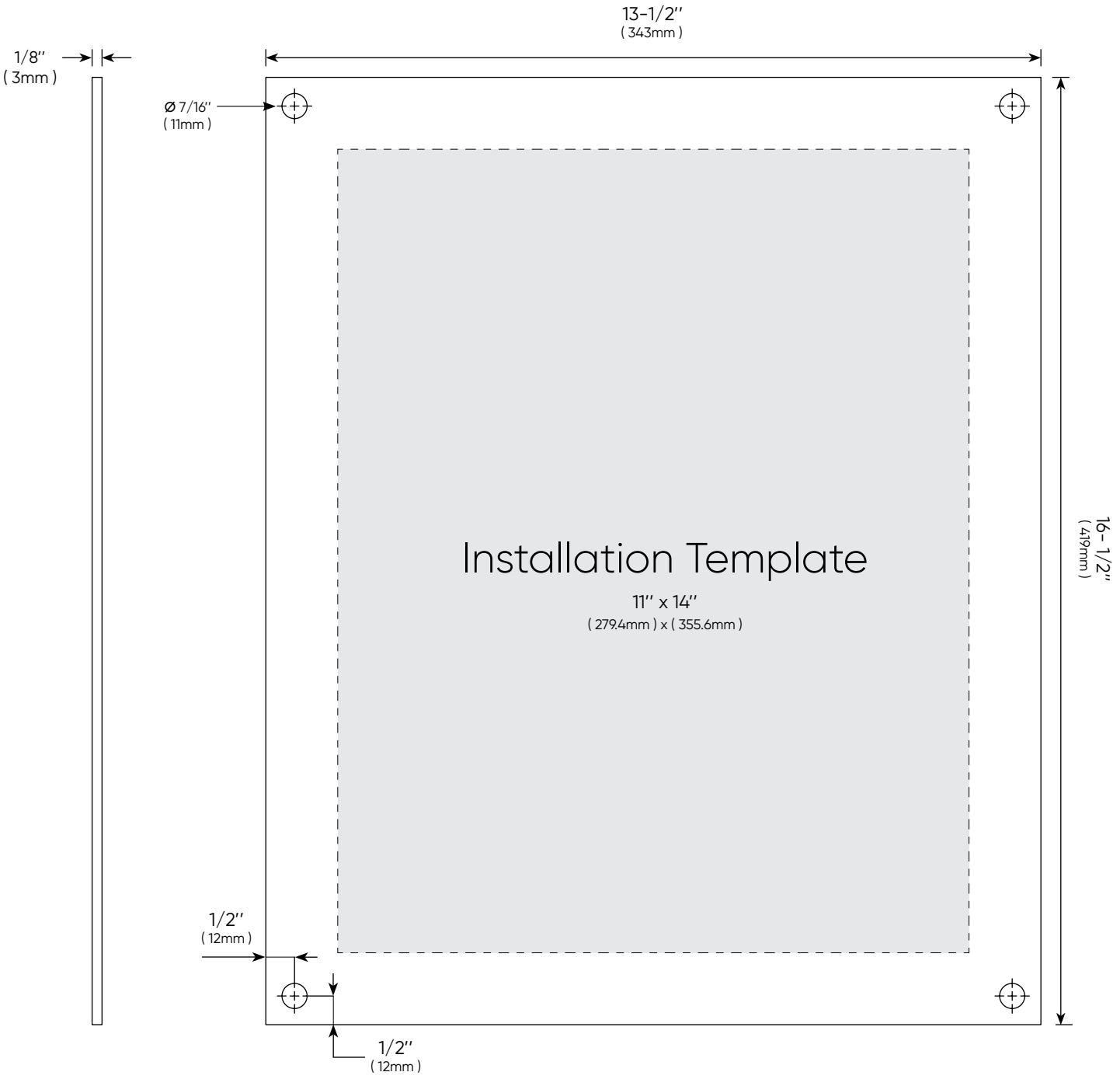
- Package Includes**
- ▶ 2 x Acrylics
 - ▶ 4 x Standoffs
 - ▶ 4 x Screws and Anchors
 - ▶ 1 x Drill Template
 - ▶ 1 x Instruction Guide

Standoffs	AS19-12SL	AS19-12BK	AS19-12GD	AS19-12BR	SBLS19-12	SBLP19-12		
Diameters	3/4" (19mm)			Distance From Wall	1/2" (12.7mm)			
Material Thickness Accepted	Between (1/8" and 5/16")			Thread	Metric M10			
Aluminum	<ul style="list-style-type: none"> ▶ Silver Anodized ▶ Black Anodized ▶ Champagne Anodized ▶ Gold Anodized 			Stainless Steel	<ul style="list-style-type: none"> ▶ Satin Brushed ▶ Polished 			
Washers	No			Washers	x 8			



Acrylics	WAC1114-C
-----------------	------------------

Frame Width	13-1/2" (343mm)	Frame Height	16-1/2" (419mm)
Insert Width	11" (279.4mm)	Insert Height	14" (355.6mm)
Top Thickness	1/8" (3mm)	Bottom Thickness	1/8" (3mm)
Pre-Drill Holes	4 x Ø 1/2" (12.7mm)	Finish	All edge polished Ultra-Fine



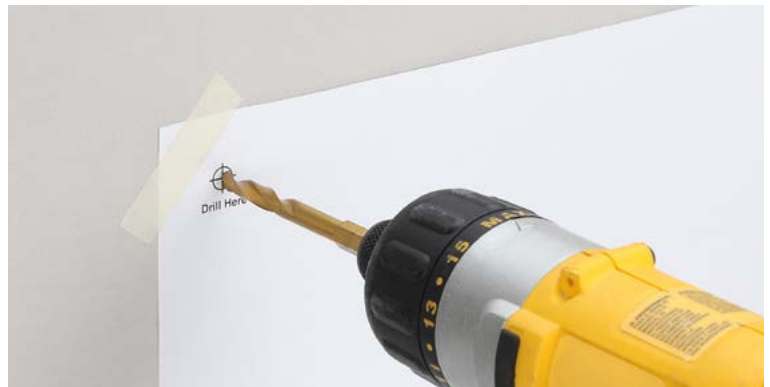
Installation Steps

Directions

- 1 Place template on wall with tape. Make sure that template is level. Mark the hole locations.



- 2 Drill a 1/4" hole in to the wall where marks were made.



- 3 Insert supplied anchors into the wall.



- 4 Mount the barrels to the wall.



Installation Steps

Directions

- 5 Remove plastic film from the back of the panels. Center your image onto one of the panels and sandwich the second panel on top of the image making sure all of the edges and holes are aligned.



- 6 Place the sandwiched panels over the standoff barrels, insert the screw caps through the holes and into the barrels. Hand tighten the screw caps to secure both the panels and image in place.



This document and the product mentioned in reference are the exclusive property of MBS-Standoffs, they can not be used, reproduced, disclosed or disclosed without prior authorization!